

North Dakota State Fair

1181418-01-02-04 • 12.15.2023



©2023 Landscape Structures. All Rights Reserved



North Dakota State Fair

1181418-01-02-03 • 12.15.2023

 Dakota Playground

©2023 Landscape Structures - All Rights Reserved



North Dakota State Fair

1181418-01-02-02 • 12.15.2023



©2023 Landscape Structures - All Rights Reserved



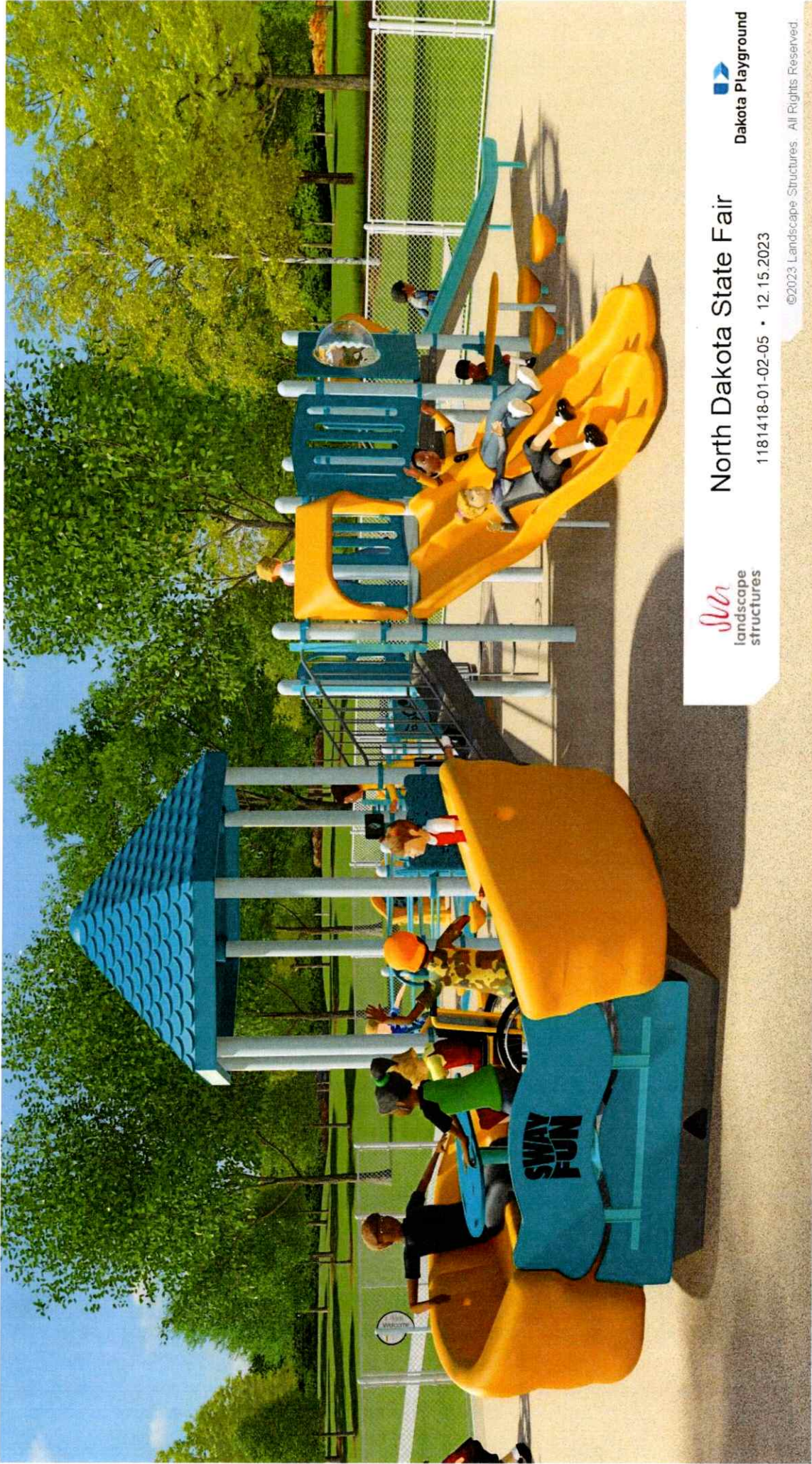
lsn
landscape
structures

North Dakota State Fair

1181418-01-02-01 • 12.15.2023

Dakota Playground

©2023 Landscape Structures. All Rights Reserved.



Slur
landscape
structures

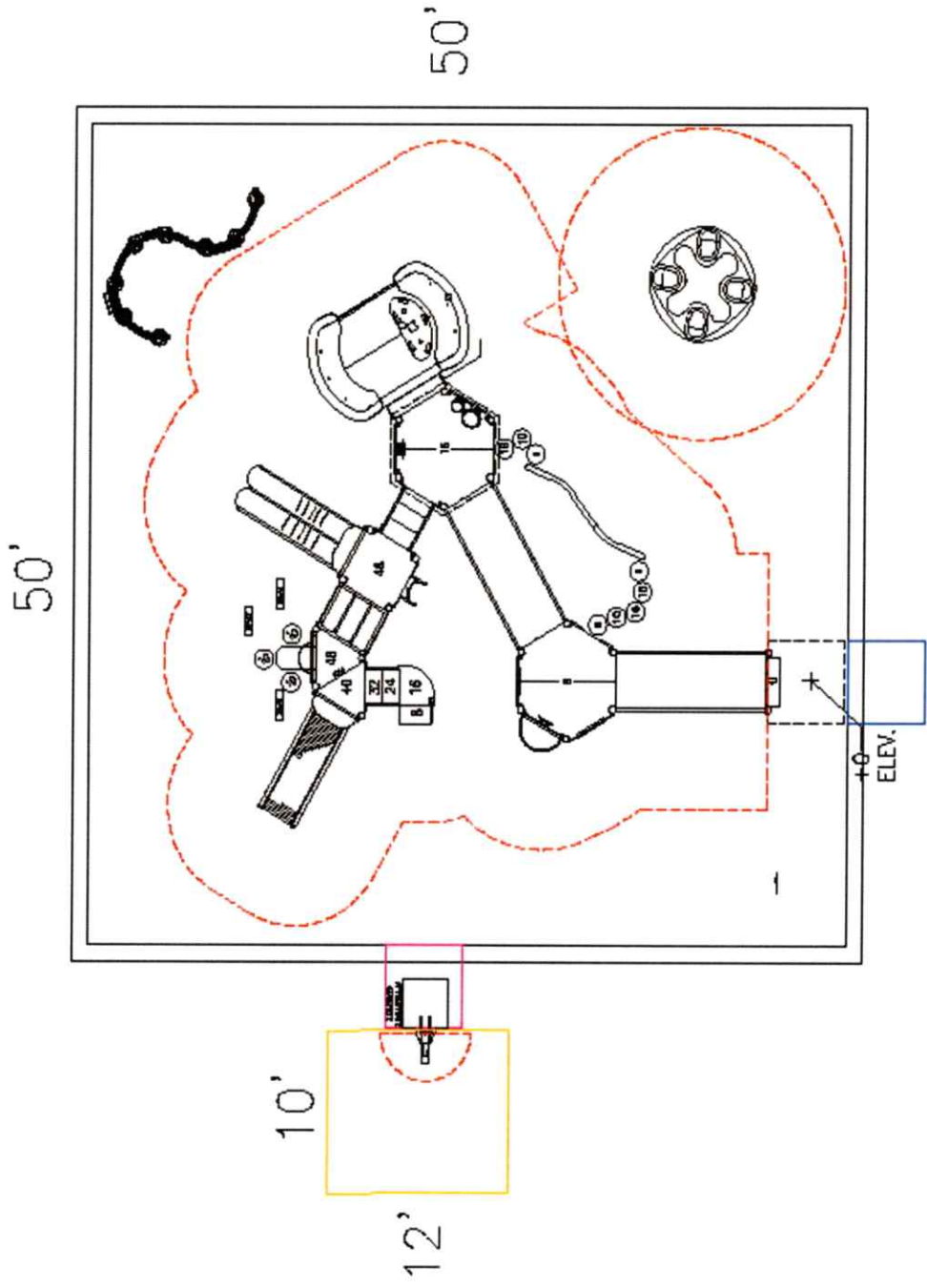
North Dakota State Fair

1181418-01-02-05 • 12.15.2023

 Dakota Playground

©2023 Landscape Structures. All Rights Reserved

North Dakota State Fair Playground





IPEMA

INTERNATIONAL
PLAY EQUIPMENT
MANUFACTURERS
ASSOCIATION



IPEMA ASTM F1487-21 CERTIFICATE OF COMPLIANCE

ISSUE DATE: December 18, 2023

Requested By: Jason Harris

Project: North Dakota State Fair

In the interest of public playground safety, IPEMA provides a third-party certification service whereby TÜV SÜD America validates a manufacturer's certification of conformance to the ASTM F1487-21 (excluding sections 7.1.1, 10, 11.2, 11.3, 13.1.1, 13.1.2, 13.2, and 13.3) Standard Consumer Safety Performance Specification for Playground Equipment for Public Use.

The manufacturer listed below has received written validation from TÜV SÜD America that the product(s) listed conform with the requirements of ASTM F1487-21 (excluding sections 7.1.1, 10, 11.2, 11.3, 13.1.1, 13.1.2, 13.2, and 13.3).

This certificate is invalid if any component or part is replaced, unless purchased from the original manufacturer and assembled in accordance with the original equipment manufacturer's instructions. Check with the manufacturer to determine the validity of the certification of the product(s) listed prior to using this certificate for proof of certification.

MODEL # COMMERCIAL NAME OF PRODUCT

PRODUCT LINE MANUFACTURER

173565A	Xylofun Pnl	PlayBooster	Landscape Structures, Inc.
184354B	Transfer Module 2-5, 40" Deck	PlayBooster	Landscape Structures, Inc.
111231A	Tenderdeck, Triangle	PlayBooster	Landscape Structures, Inc.
111228A	Tenderdeck, Square, Brown Only	PlayBooster	Landscape Structures, Inc.
178710A	Tenderdeck, Hexagon	PlayBooster	Landscape Structures, Inc.
130565A	Table Panel	PlayBooster	Landscape Structures, Inc.
138871A	SWAY FUN	PlayBooster	Landscape Structures, Inc.
168100A	Sensory Wall Play Center, DB	Freestanding Play	Landscape Structures, Inc.
168661A	Sensory Wall Attachment Plate	Freestanding Play	Landscape Structures, Inc.
168662A	Sensory Marble Panel	Freestanding Play	Landscape Structures, Inc.
168101A	Sensory End Play Center, DB	Freestanding Play	Landscape Structures, Inc.
168102A	Sensory Alphamaze and Labyrinth Panel	Freestanding Play	Landscape Structures, Inc.
123333A	Roller Slide, 40" Decks	PlayBooster	Landscape Structures, Inc.
156232A	Ramp w/ Guardrail, 3-Handrails Per Side and Curbs	PlayBooster	Landscape Structures, Inc.
120325A	Ramp Berm Exit Plate	PlayBooster	Landscape Structures, Inc.
177721A	Rain Sound Wheel Panel	Freestanding Play	Landscape Structures, Inc.
111403F	Post for Roof, 142" / 32" Deck, (Alum)	PlayBooster	Landscape Structures, Inc.
111404I	Post for Deck, 84" / 8" Deck (Alum)	PlayBooster	Landscape Structures, Inc.



IPEMA

INTERNATIONAL
PLAY EQUIPMENT
MANUFACTURERS
ASSOCIATION



IPEMA ASTM F1487-21 CERTIFICATE OF COMPLIANCE

ISSUE DATE: December 18, 2023
Requested By: Jason Harris
Project: North Dakota State Fair

MODEL #	COMMERCIAL NAME OF PRODUCT	PRODUCT LINE	MANUFACTURER
111404J	Post for Deck, 76" Post, Grnd Level (Alum)	PlayBooster	Landscape Structures, Inc.
111404D	Post for Deck, 124"/48" Deck (Alum)	PlayBooster	Landscape Structures, Inc.
111404E	Post for Deck, 116"/40" Deck (Alum)	PlayBooster	Landscape Structures, Inc.
120710A	POD CLIMBER, 8"	Freestanding Play	Landscape Structures, Inc.
158997A	Pod Climber, 10"	Freestanding Play	Landscape Structures, Inc.
120711A	Pod Climber 16"	Freestanding Play	Landscape Structures, Inc.
117957A	Periscope Panel	PlayBooster	Landscape Structures, Inc.
173591A	Omnispin Spinner	Freestanding Play	Landscape Structures, Inc.
128252A	Loop Ladder 40" - 48" Deck	PlayBooster	Landscape Structures, Inc.
130567A	Hex Shingle Roof	PlayBooster	Landscape Structures, Inc.
127953A	Handhold Panel	PlayBooster	Landscape Structures, Inc.
123336A	Double Wave Slide 48"-56" Deck	PlayBooster	Landscape Structures, Inc.
152907C	Deck Link, 3-Step w/ Barrier	PlayBooster	Landscape Structures, Inc.
100041A	CURVED BALANCE BEAM	Freestanding Play	Landscape Structures, Inc.
115243A	Chimes Panel	PlayBooster	Landscape Structures, Inc.
115223A	Bubble Panel Permalene	PlayBooster	Landscape Structures, Inc.
164092A	Bongo Panel	PlayBooster	Landscape Structures, Inc.
111240A	Balcony Deck	PlayBooster	Landscape Structures, Inc.
114665A	ARCH BRIDGE, 42" W/PERMALENE BARRIER	PlayBooster	Landscape Structures, Inc.
121948A	6/8" Kick Plate, Square Decks	PlayBooster	Landscape Structures, Inc.





North Dakota State Fair Playground

Model Information

Minot, ND
December 14, 2023
NORTH DAKOTA STATE FAIR
LSI VERSION PLAYBOOSTER (2-12 YEARS)



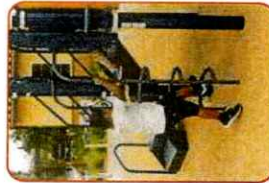
Double Wave Slide



Rollerslide



Deck Link w/Steel Barriers



Loop Ladder w/Permalene® Handholds



Arch Bridge (42") w/Permalene® Barriers



Ramp w/Guardrails



Balcony Deck



Bongo Panel®



Bubble Panel

Models shown include standard play products only.

For a better tomorrow
we play today.®

playlsi.com



Dakota Playground

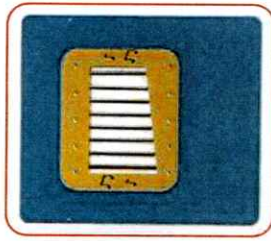
Proudly presented by:



North Dakota State Fair Playground

Model Information

Minot, ND December 14, 2023 NORTH DAKOTA STATE FAIR
LSI VERSION PLAYBOOSTER (2-12 YEARS)



Chimes Panel



Handhold Panel



Navigator Reach Panel



Periscope Panel (Permalene®)



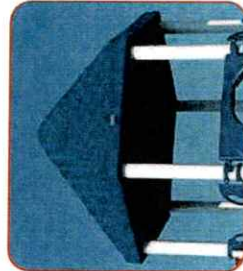
Table Panel



Xylofun Panel®



Sway Fun® Glider (16'')



Hex Shingle Roof



Pod Climber® 8''

Models shown include standard play products only.

For a better tomorrow
we play today.™

playlsi.com

Proudly presented by:



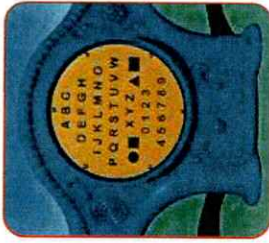
Dakota Playground



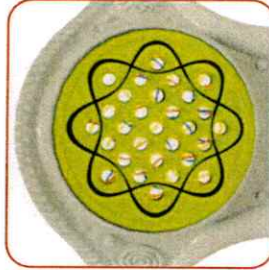
North Dakota State Fair Playground

Model Information

Minot, ND December 14, 2023 NORTH DAKOTA STATE FAIR
LSI VERSION PLAYBOOSTER (2-12 YEARS)



Alphamaze and Labyrinth Panel™



Marble Panel®



Rain Sound Wheel Panel™



Sensory Play Center® End



Sensory Play Center® Wall



OmniSpin® Spinner



SuperScoop, Accessible



Sway Fun® Glider (16'')



Curved Balance Beam

Models shown include standard play products only.

For a better tomorrow
we play today.™

playlsi.com



Proudly presented by:



North Dakota State Fair Playground

Environmental Statement

Minot, ND December 14, 2023 NORTH DAKOTA STATE FAIR LSI
VERSION PLAYBOOSTER (2-12 YEARS)

Since January 2008, Landscape Structures has partnered with American Forests to purchase trees which will offset the CO₂ generated in our manufacturing processes. These trees will not only sequester the CO₂, they help filter water, remove air pollution, provide wildlife habitat and improve our natural environment.



AMERICAN FORESTS

CARBON FOOTPRINT OF LANDSCAPE STRUCTURES PRODUCT:

Tons of CO₂: 15.12
of Trees: 45

Carbon Footprint: A measurement of the effect on the climate in terms of the amount of greenhouse gases produced in the Landscape Structures manufacturing process measured in units of carbon dioxide (CO₂).

RECYCLED CONTENT OF LANDSCAPE STRUCTURES PRODUCT:

Steel	2,192 lbs.
Aluminum	603 lbs.
Rubber	0 lbs.
Plastic	0 lbs.
Total Recycled Content:	2,795 lbs.
Total Post-Consumer Recycled Content:	1,667 lbs.
Total Recycled Content (%):	41%
Total Post-Consumer Recycled Content (%):	25%
Total Weight:	6,788 lbs.

Total Recycled Content: Material that has been recovered or diverted from the solid waste stream.

Total Post-Consumer Recycled Content: Material generated by households or commercial, industrial and institutional facilities in their role as end-users. This material can no longer be used for its original intended purposes.

2009 LEED INFORMATION FOR RECYCLED CONTENT:

If you are pursuing LEED certification for your project, please share the following information with your LEED project manager.

Post-Consumer Recycled Weight:	1,667 lbs.
½ Pre-Consumer Recycled Weight:	½ x 1,128 lbs.
LEED Recycled Fraction Weight:	2,231 lbs.
LEED Recycled Fraction %:	33%
Total Recycled Content Value:	\$41,180.70

Calculations include standard play products only.